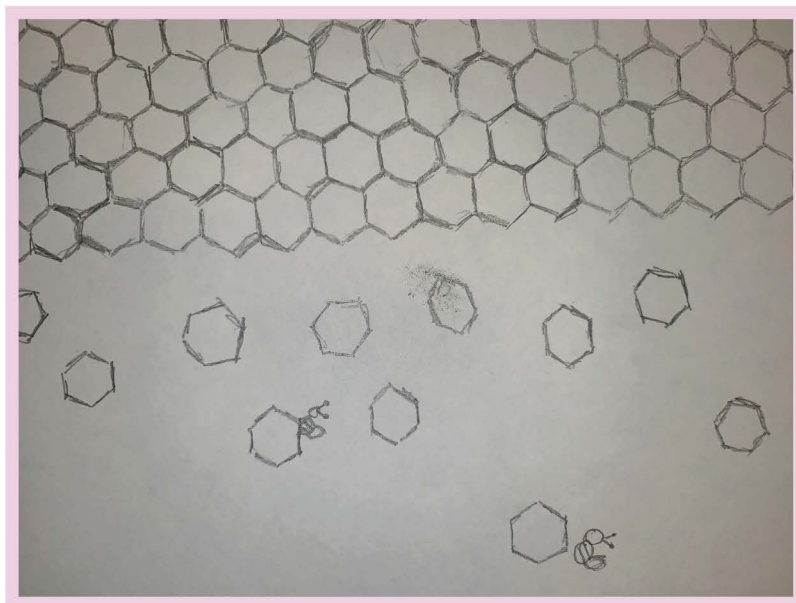
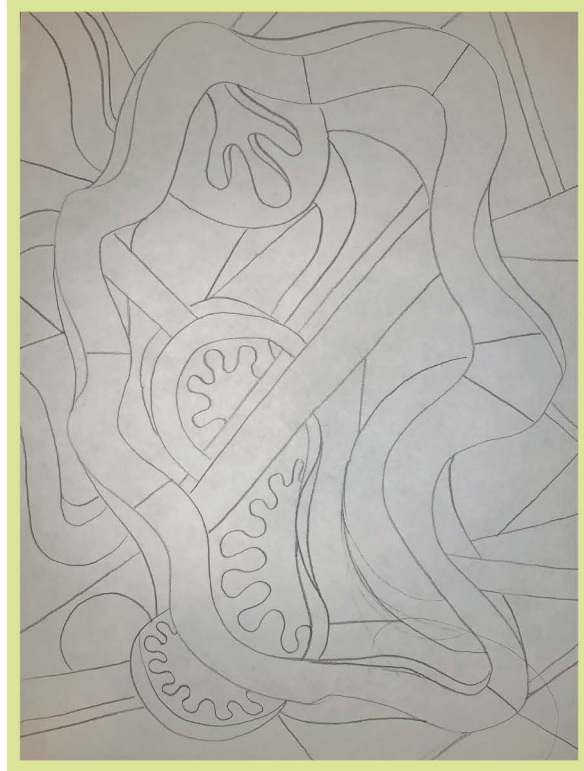
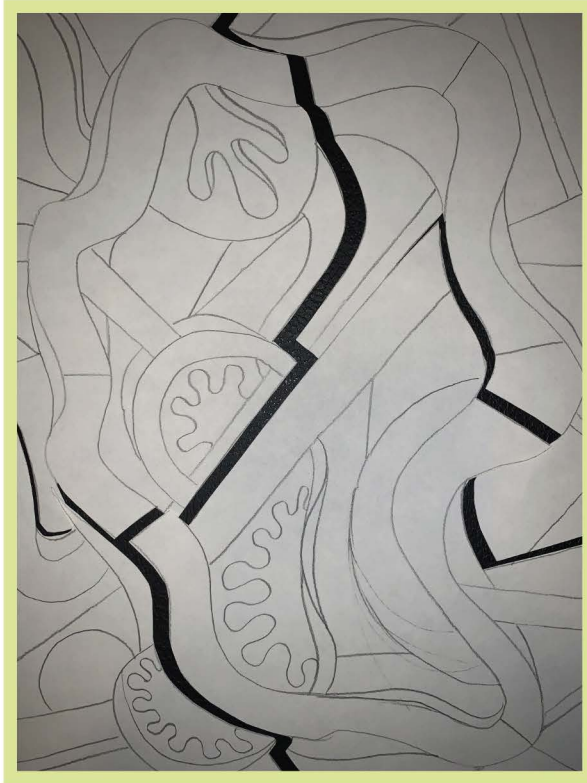


Collaborative Compositions

Create a line drawing that covers your entire sheet of paper (the drawing can be of something specific or totally random).



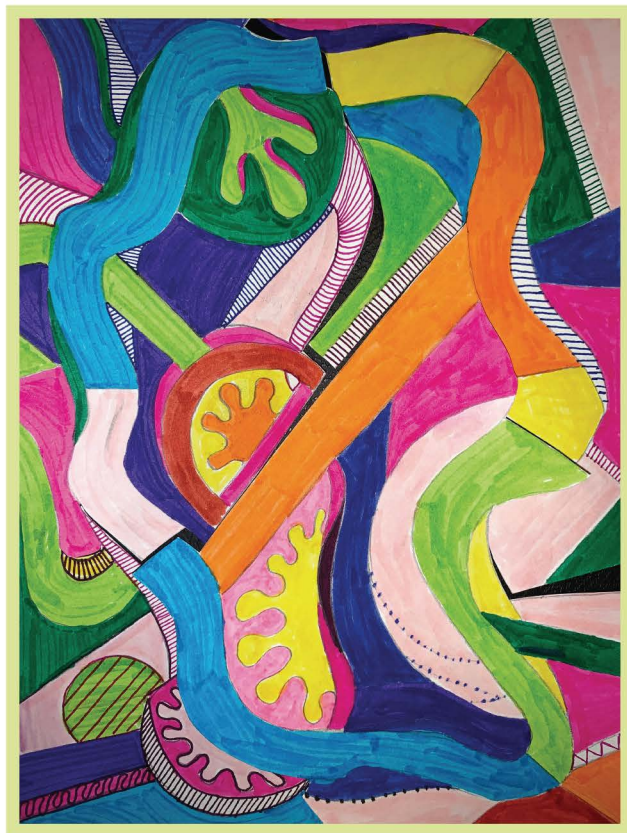


Cut the drawing into 3-5 sections. Swap 2-3 sections with your partner and decorate each piece using different materials, colors, and patterns.





Once you are finished, pass your partner's pieces back to them. See how they fit together.



Inspiring Artworks



Dorothy Shakespear
Composition in Blue and Black
1914-15
Watercolor and collage on paper
Collection of the Ruth and Elmer Wellin
Museum of Art
Gift of Omar S. Pound, Class of 1951

Here, I was inspired by the geometric asymmetry and the combination of 2D and 3D shapes.

I really enjoy the depth of these prisms and their unique qualities (like color, shape, and interior fill). They ultimately work well together to make a very geometric print layout.



Miki Soejima,
Still Life 04
2014 (printed 2017)
Archival inkjet print
Collection of the
Ruth and Elmer
Wellin Museum of
Art
Purchase, The
Edward W. Root
Class of 1905
Memorial Art
Purchase Fund