

# HAMILTON COLLEGE FIRE SAFETY PLAN

## EMERGENCY COMMUNICATIONS

- |   |   |
|---|---|
| <ul style="list-style-type: none"><li>➤ <b>Report fires or other emergencies to Campus Safety by:</b><ul style="list-style-type: none"><li>• Calling x4000/911 by campus phones or 315-859-4000 by cell</li><li>• Calling 911 by cell to reach Oneida County Emergency Dispatch</li><li>• Manually engaging a fire alarm pull station</li></ul></li></ul> | <ul style="list-style-type: none"><li>➤ <b>Emergency information may be communicated to you by:</b><ul style="list-style-type: none"><li>• Building-based fire alarm horns, visual strobes or voice commands</li><li>• Reverse 911 notifications (by email, office phone, home phone, cell phone, text message) or the emergency outdoor warning system</li></ul></li></ul> |
|---|---|

## FIRE EMERGENCY

- |  |   |
|--|---|
| <ul style="list-style-type: none"><li>➤ <b>If your evacuation route is clear and unobstructed...</b><ul style="list-style-type: none"><li>• Alert others in the vicinity of the fire verbally and/or by engaging a fire alarm pull station, and evacuate through your nearest exit/exit stairwell by walking quickly.</li><li>• Do not run and do not use elevators during a fire evacuation.</li><li>• Confine the fire (if and when you can) by closing doors and windows as you evacuate.</li><li>• If you encounter smoke or heat while evacuating, stay as low to the floor as possible.</li><li>• Report to your muster point upon exiting the building, or your assembly point if directed to do so by your Building Coordinator, CA or Campus Safety.<ul style="list-style-type: none"><li>○ <b>Special Note—fire extinguishers should only be used by trained and authorized personnel, and are never recommended for uncontrolled fires.</b></li></ul></li></ul></li></ul> | <ul style="list-style-type: none"><li>➤ <b>If your evacuation route is obstructed...</b><ul style="list-style-type: none"><li>• Retreat to a safe area and shelter-in-place.</li><li>• Seal the area under/around your door with clothing to minimize smoke intrusion. If fire sprinklers are present and working, let them perform their function.</li><li>• Notify Campus Safety of your location by phone, or verbally announce your location through an open window at regular intervals. Otherwise keep windows closed so as not to draw the fire towards your location.</li></ul></li></ul> |
|--|---|

## MEDICAL EMERGENCY

- **Check**—Check and assess the injured victim, and protect him/her from further injury. Assist with the use of safety equipment (safety showers, eyewashes) as needed. Remove any persistent threat to the victim, but do not move him/her unless absolutely necessary.
- **Call**—Notify Campus Safety. Be sure to provide information regarding location and the extent of the injury.
- **Care**—Provide 1<sup>st</sup> Aid/CPR/AED care only if you have the appropriate training. Otherwise comfort the victim until help arrives.

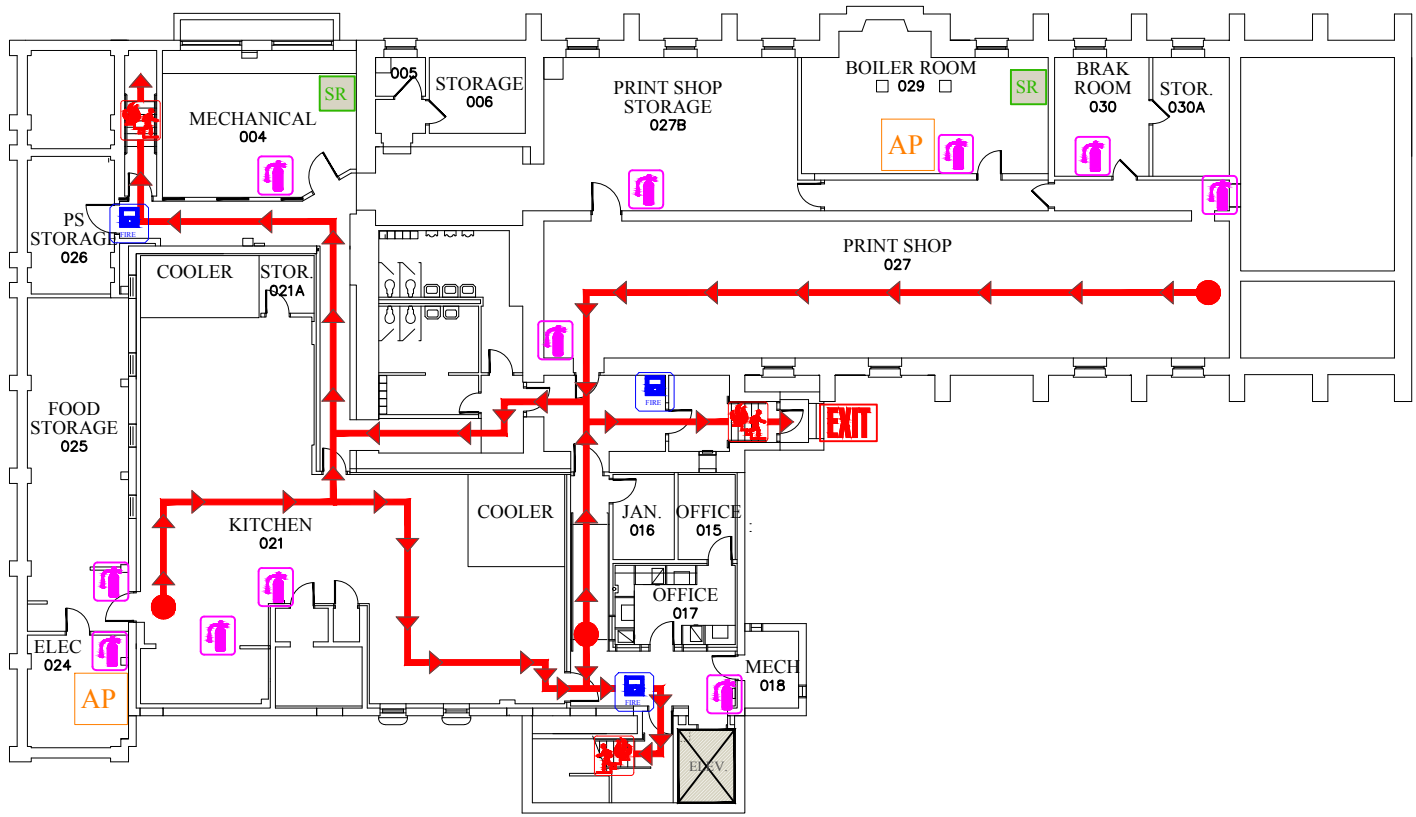
## LAW ENFORCEMENT EMERGENCY

- **Run**—Protect yourself (and others if you are able) from any active threat. Once you are safe call Campus Safety (315-859-4000) or 911.
- **Hide**—If escape is not possible, find a place to hide and block doors, avoid windows and silence your cell phone.
- **Fight**—Only as a last resort if your life is in imminent danger.







## OTHER INFORMATION SOURCES

Visit the website below for additional emergency planning and preparedness information:

<https://www.hamilton.edu/emergency-planning-and-procedures>



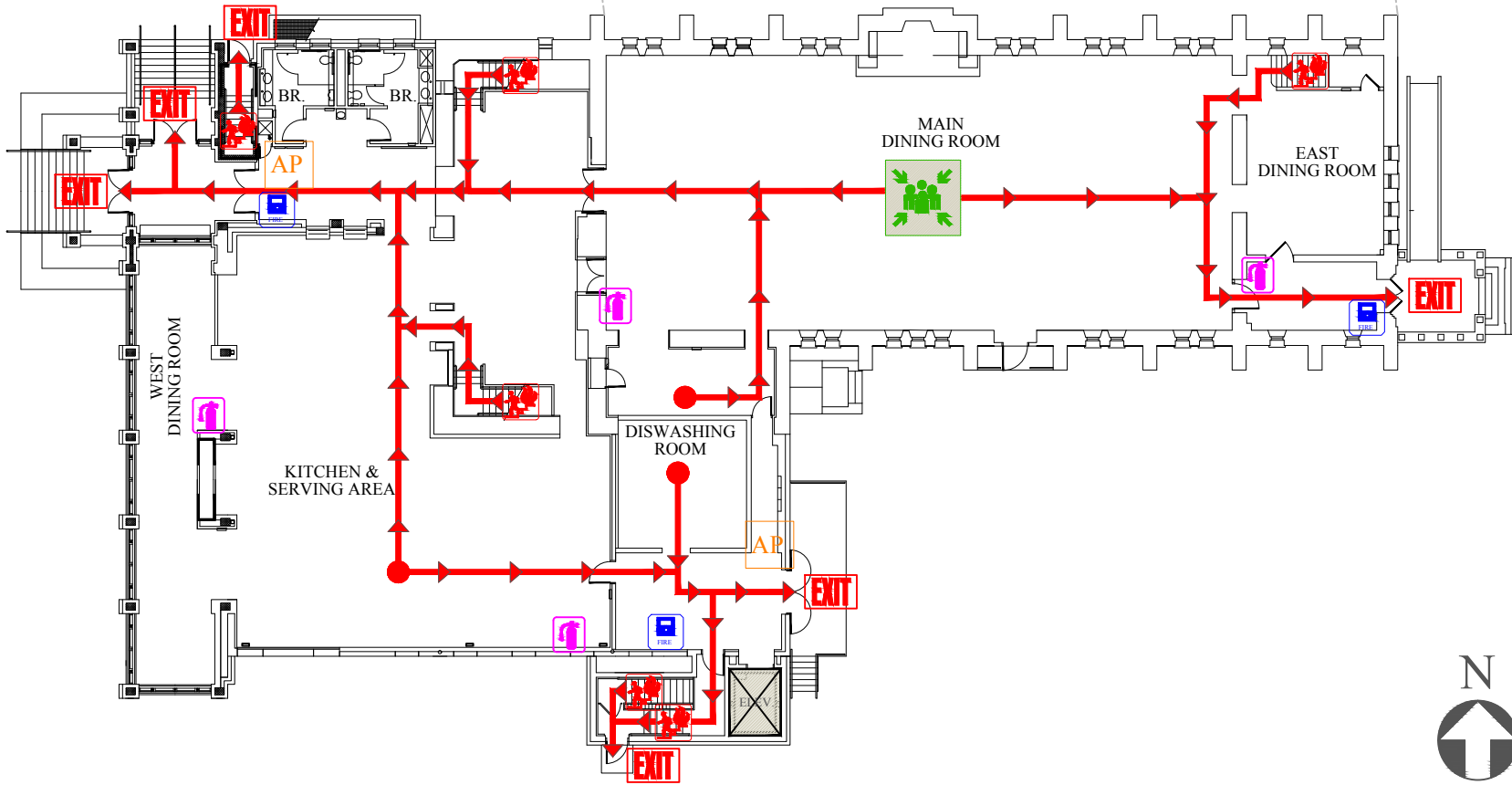
Legend

-  Evacuation Route
-  Stair Evacuation Route
-  Fire Alarm Pull Station
-  Fire Extinguisher
-  Emergency Fire Exit
-  Sprinkler Room
-  Annunciator Panel










WEST MEZZANINE

EAST MEZZANINE

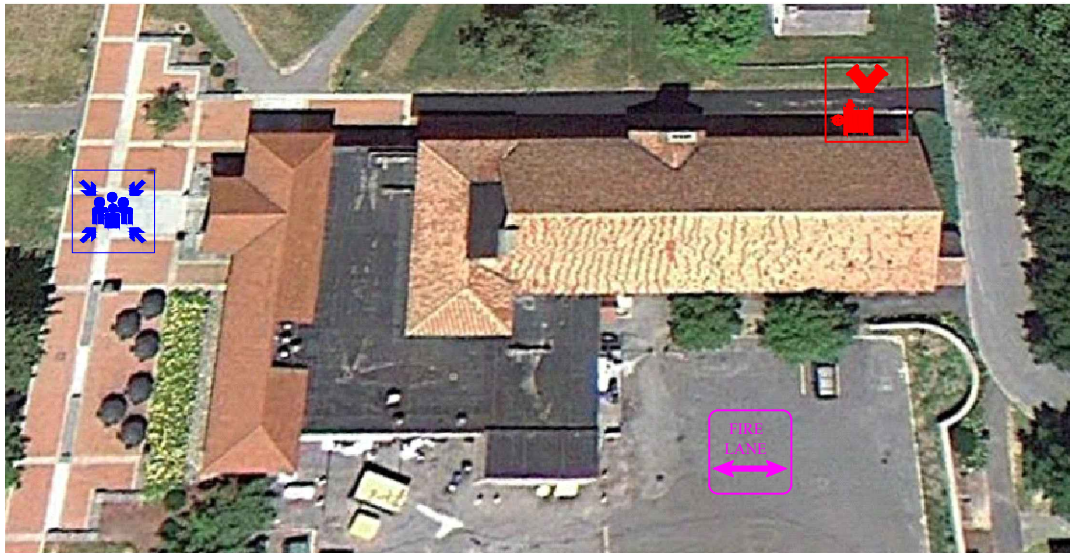


Legend

-  Evacuation Route
-  Stair Evacuation Route
-  Fire Alarm Pull Station
-  Fire Extinguisher
-  Emergency Fire Exit
-  Public Assembly
-  Annunciator Panel



Level 1 and East / West Mezzanine



| COMMONS DINING HALL (170 COLLEGE HILL ROAD) |   |                        |
|---|---|------------------------|
| Building Coordinator                        | Muster Point  | Primary Assembly Point |
| Yvonne Schick, Parkhurst                    | Front door facing Martin's Way  | Tolles Pavilion        |
| <b>Fire Safety System Info</b>              | Fire Sprinklers, Monitored Smoke/Heat/Carbon Monoxide Detectors, Limited Hood Suppression System (food cooking operations in the basement kitchen and 1 <sup>st</sup> floor kitchen/servery areas)  |                        |
| <b>Special Fire Safety Notes</b>            | <ul style="list-style-type: none"> <li>Bulk carbon dioxide (CO2) is piped into the basement kitchen with multiple annunciators that alarm locally only; local activation of a CO2 detector shall initiate an immediate emergency evacuation followed by Campus Safety notification</li> </ul> |                        |



## Site Plan



### Legend



Fire Dept.  
Connection



Muster  
Point



Fire Dept.  
Access Route